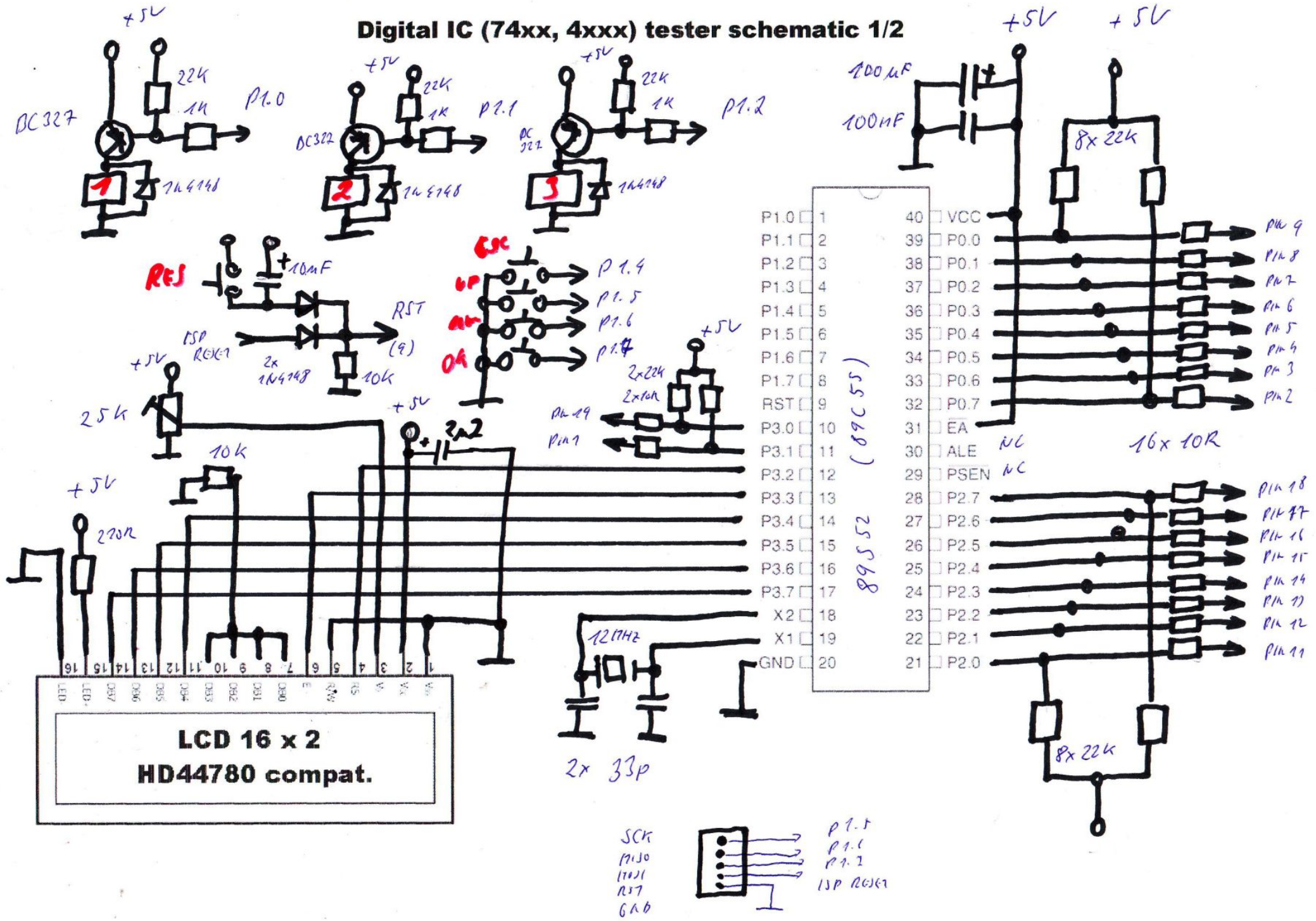


# Digital IC (74xx, 4xxx) tester schematic 1/2

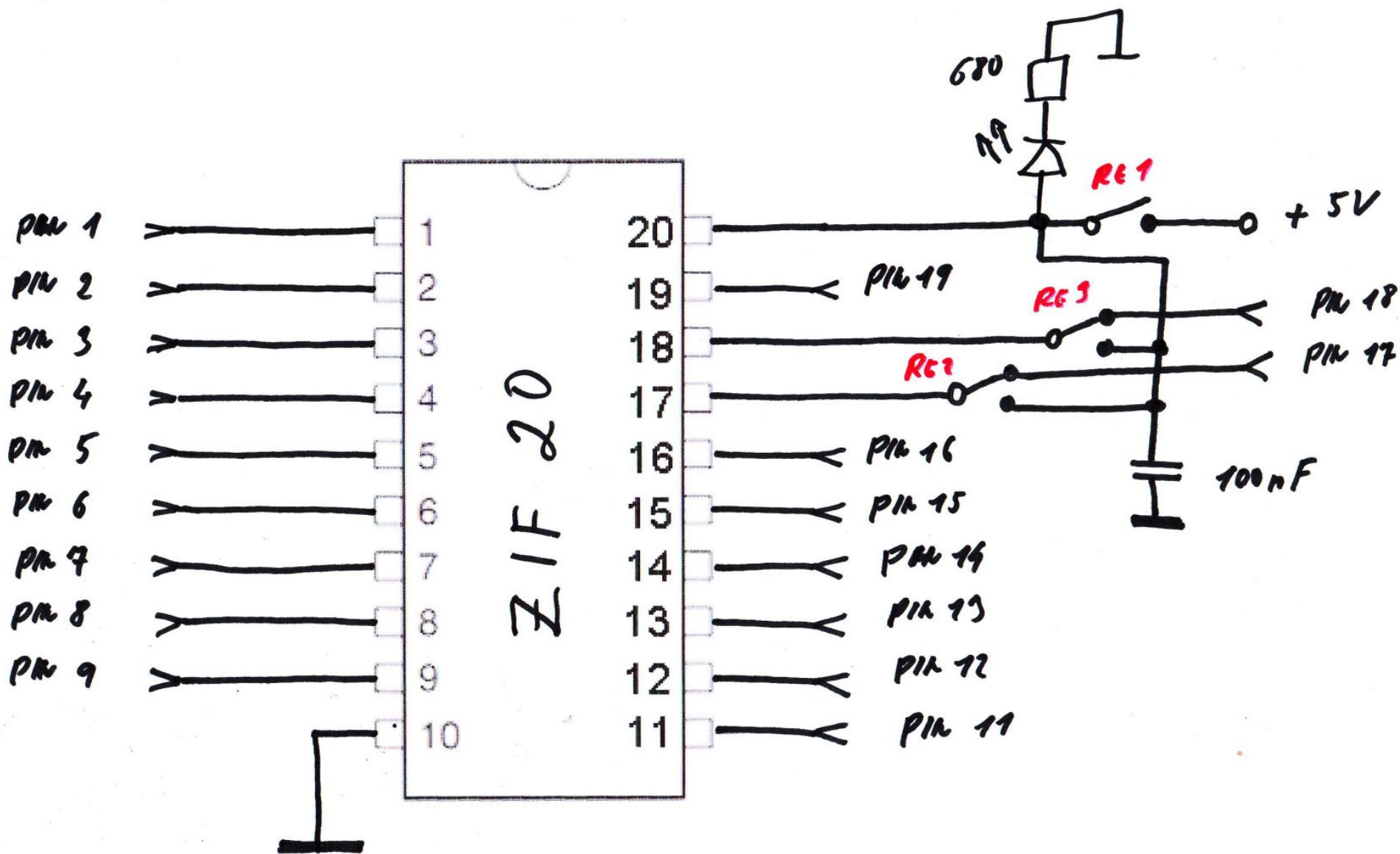


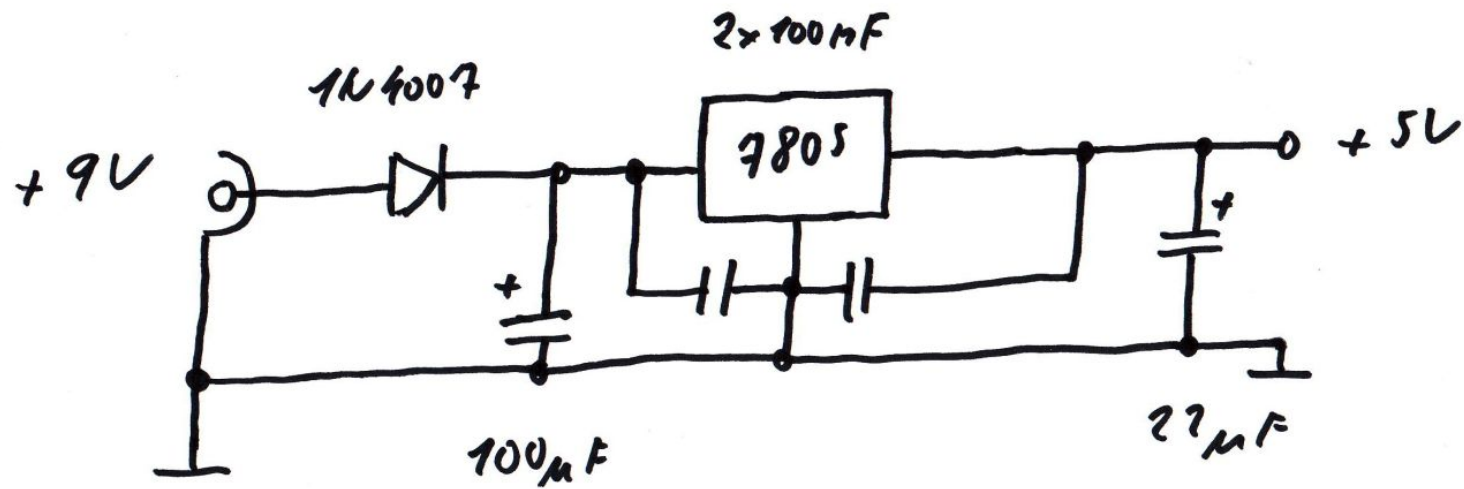
P1.0	1	40	VCC
P1.1	2	39	P0.0
P1.2	3	38	P0.1
P1.3	4	37	P0.2
P1.4	5	36	P0.3
P1.5	6	35	P0.4
P1.6	7	34	P0.5
P1.7	8	33	P0.6
RST	9	32	P0.7
P3.0	10	31	EA
P3.1	11	30	ALE
P3.2	12	29	PSEN
P3.3	13	28	P2.7
P3.4	14	27	P2.6
P3.5	15	26	P2.5
P3.6	16	25	P2.4
P3.7	17	24	P2.3
X2	18	23	P2.2
X1	19	22	P2.1
GND	20	21	P2.0

SCK  
 MISO  
 MOSI  
 RST  
 GND

P1.5  
 P1.6  
 P1.7  
 ISP RC6E9

# Digital IC (74xx, 4xxx) tester schematic 2/2





IC TESTER - POWER SUPPLY